

Issue 2 – February 1, 2003

## High Speed Steel Roof Shingle Production System

Recently, Seifert Technologies, Inc. was approached by BRIGHTSMITH, LLC to implement a production steel shingle manufacturing system which was developed in conjunction with ATAS International, Inc. and WEIRTEC, a division of Weirton Steel Corporation. Using their patented process to produce steel shingles at a rate exceeding (10) shingles per minute was not a small task due to the complexity of the shingle design.

Each shingle section is approximately (1) foot x (3) feet in area. The steel strip is galvanized, painted and embossed prior to the stamping process. All four edges are made with open hems in order to interlock with the adjacent shingles. The hems at two of the edges are tapered for ease of assembly and proper drainage of rainwater.

After investigating three different processes, a (600) ton, seven station transfer feed press was selected. The press complete with dies, servo transfer feed, uncoiler, scrap removal, part lubrication and exit conveyor were priced and presented to the customer.

The stamping design brought on unique challenges due to the architectural footprints required. The shingles are available in a pattern that resembles tile, slate, asphalt and cedar shake. Innovative die designs allowed the forming of these patterns without cracking the pre-painted and pre-galvanized material.

The shingle life is expected to be over (50) years due to the material selection and the patented product design that eliminates raw edges from being exposed to the elements after shingle installation.

Steel roofing reduces the weight of your roof, is easy to install and is long lasting. This roofing

system is strong enough to handle even the most damaging weather, is energy efficient and environmentally friendly.

Installation and start up of the production line is now complete. The line is in full production and located in the Allentown, PA plant of BRIGHTSMITH. It operates routinely at (20) shingles per minute. Mr. Robert Goodhart of ATAS International praised Seifert Technologies for their involvement in the project. "It was a pleasure working with the people of Seifert Technologies. Their engineering expertise, creativity and cooperative spirit were of great value to this project. I would recommend them to anyone wishing to pursue similar ventures."

For more information:  
[http://www.weirton.com/products/construction\\_old/roofing.html](http://www.weirton.com/products/construction_old/roofing.html)



Mr. Clarence Warstler, Project Manager of Seifert Technologies, shown here with a typical shingle section.

**Next Issue:**

- \* Tim Seifert appointed to Gov. Taft's Third Frontier Canton Panel.
- \* Highlights of our Electrical Control Panel Fabrication Services.

# Business Consulting Now Available At Seifert Technologies

Seifert Technologies, 18-year providers of outsource and in-house Engineering Services is now offering Business Management Consulting Services to Manufacturing and Service based companies. The new consulting services are patterned after the top Consulting Company business models and are tailored to meet the needs of the turn-around and growing businesses in Northeast Ohio. The following modules are now available:

**Strategic Sourcing**-is a comprehensive two part program aimed at performing an in depth analysis of **“Make Vs Buy”** for your product segmentations. The first part is a deep dive into your manufacturing processes to create workable cost reductions and compare this new standard cost with the best, non-competitive, domestic and off-shore outsourcing costs. The second part of this module is to implement the chosen path to completion and secure the optimum cost reductions for your business.

**New Product Development**-is a highly structured process designed to optimize new product **speed to market**, from concept inception to warehouse, and to assure the project stays within budget and meets target costs. This is a **“Project Management”** based process, which will develop your existing personnel to perform as a team and become more efficient at their job tasks.

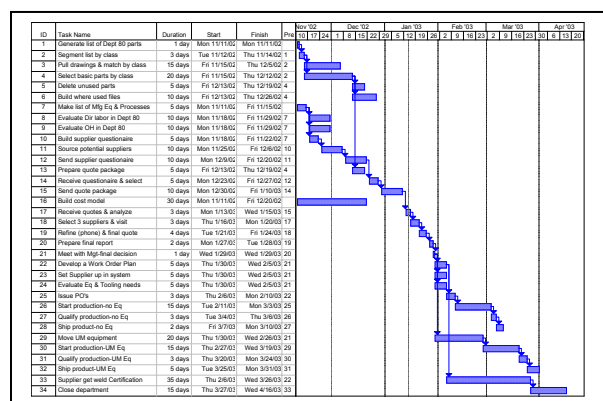
**Optimizing Salary and Indirect Hourly Personnel**-is a highly successful cost reduction analysis based on evaluating job intent and converging functions into the most efficient format for your business.

This is a **“Job Focus”** based process, which will eliminate the needless overlap of job functions and consolidate the workload to individuals with measurable performance metrics. This process will make your Team more efficient and often results in reducing your work force.

**Standard Cost Review and Up-date**-is a detailed analysis of your manufacturing cost structure to assure **“ALL”** costs are captured and assigned to the appropriate product. We evaluate the need for a fixed based or activity based accounting system and allocate the proper overhead costs proportionally.

This **“Cost Model”** process is particularly useful in determining which products are actually making a true profit and establishing guidelines to eliminate or outsource low profit products.

Highly trained professionals, who are very experienced in their assigned areas, perform this work. They will work in your office environment and integrate with your staff personnel to develop them and minimize the project costs. This approach is very confidential and is proven to produce positive results.



Make vs. Buy Analysis



SEIFERT TECHNOLOGIES, INC. – Engineers/Designers/IT Professionals  
SEIFERT ENGINEERING, INC. – Design & Build  
SEIFERT & ASSOCIATES, INC. – Technical Employment Services

**Corporate Office**

**The Seifert Group**

2323 Nave Road SE

Massillon, Ohio 44646

PHONE : (330) 833-2700

FAX : (330) 833-2793

EMAIL : [Sales@Seifert.com](mailto:Sales@Seifert.com)

**Nashville Office**

**The Seifert Group**

222 Jackson Meadows Dr.

Hermitage, TN 37076

PHONE : (615) 883-3140

FAX : (615) 883-1035

EMAIL : [Sales@Seifert.com](mailto:Sales@Seifert.com)

If you are interested in receiving The Seifert Group TechFlash newsletter via email, contact Tim Seifert at [seifertt@seifert.com](mailto:seifertt@seifert.com)